



ULTRAMATIC EQUIPMENT CO.

Vibratory Finishing Equipment Technology Since 1959



Made in
the USA

SPECIFICATION SHEET

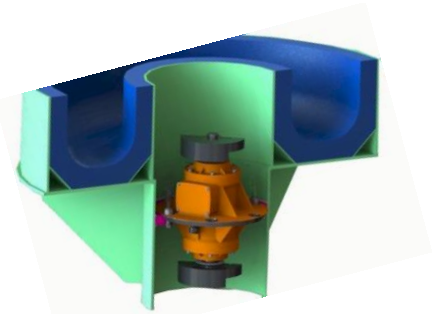
Ultramatic Model **VB10P** Vibratory Deburring and Finishing Bowl Machine. Specified and described below. Wet or Dry applications.

SPECIFICATIONS	
Bowl Diameter	51
Channel Width	15
Channel Depth	15
Capacity	10 Cu. Ft.
Load Capacity	3000 lbs.
Machine Height	48"
Machine Length	59"
Machine Width	51"
Shipping Weight	2800 Lbs.
Lining: 80 Durometer	1-1/4 (high wear area)
Voltage	230/460/3/60
Drive Unit: 3 HP (5,663 lbs force)	1800 Rpm
Specifications subject to change	



FEATURES INCLUDED IN THE BASE PRICE

Direct Drive Series features a Heavy-Duty Vibratory Motor mounted directly to the Bowl. This unique design feature eliminates belts and pulleys and supplies 100 % power to the Tub. Requires 50% less HP resulting in huge electrical operation cost savings.



HIGH SPEED VIBRATOR MOTOR with easily adjustable weights virtually requires no maintenance. The unit is sealed and Lubricated for Life.



CONTROL PANEL WITH PROCESS TIMER FOR 3 PHASE MACHINE • includes U.L. listed components housed in a Nema type 12 enclosure. 230 or 460 volts, 3 phase voltage is transformed to 110 volts at operator controls. Includes process timer and receptacle for compound pump. Fused disconnect by Customer.



ADDITIONAL FEATURES INCLUDED IN BASE PRICE

- CAST PREMIUM POLYURETHANE LINING 80 DUROMETER
- DIRECT DRIVE MOTOR W/ ADJUSTABLE WEIGHTS
- HEAVY DUTY STEEL PLATE FABRICATED BOWL & BASE
- LUBE FOR LIFE VIBRATORY MOTOR
- URETHANE MOUNTED COIL SPRING SUSPENSION
- PAINT: TWILIGHT GRAY INDUSTRIAL ENAMEL
- ADJUSTABLE AMPLITUDE
- DISCHARGE DOOR AND REMOVABLE DRAIN
- SOLUTION INPUT VALVE
- POLYURETHANE CENTER POST COVER
- 1 YEAR WARRANTY

AVAILABLE OPTIONS



Optional Auto Premix
Compound System

Sound Covers

