



SPECIFICATION SHEET

Ultrasonic Model VB2VT Vibratory Deburring and Finishing Bowl Machine. Specified and described below. Wet or Dry applications.

SPECIFICATIONS	
Bowl Diameter	30
Channel Width	8
Capacity	2 Cu. Ft.
Load Capacity	600 Lbs.
Machine Height	38"
Machine Length	36"
Machine Width	32"
Shipping Weight	950 Lbs.
Lining: 80 Durometer	5/8 "
Input Voltage	110/1/60
Drive Unit: 1 HP	1800 Rpm
Specifications subject to change	



VB with Variable Speed Drive, On Off Timer Switch with corded plug Included with Machine

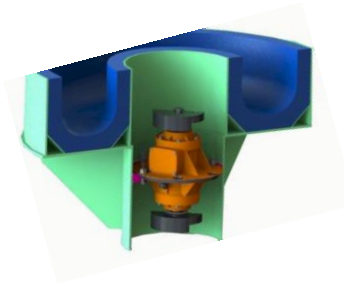
STANDARD FEATURES

- CAST PREMIUM POLYURETHANE LINING
- DIRECT DRIVE MOTOR W/ ADJUSTABLE WEIGHTS
- HEAVY DUTY STEEL PLATE FABRICATED BOWL AND BASE
- URETHANE MOUNTED COIL SPRING SUSPENSION
- AC VARIABLE SPEED DRIVE W/ DIGITAL DISPLAY
- 110 VOLT TIMER SWITCH WITH CORDED PLUG STAND MOUNTED
- DISCHARGE DOOR AND REMOVABLE DRAIN
- LUBRICATED FOR LIFE MOTOR
- SOLUTION INPUT VALVE
- RECEPTACLE FOR SOLUTION PUMP
- PAINT: TWILIGHT GRAY INDUSTRIAL ENAMEL
- 1 YEAR WARRANTY

DIRECT DRIVE SERIES ▪ features a Heavy Duty Vibratory Motor with easily adjustable weights. This unique design feature eliminates belts and pulleys and supplies 100 % power to the Tub. Requires 50% less HP resulting in huge electrical operation cost savings.



Adjustable Flywheels
and Weights



Direct Drive Motor System
100% power to the Bowl
50% less HP required than
belt drive machines
Lubricated for Life
No Maintenance required

ADDITIONAL STANDARD FEATURES



Variable Speed, On Off
Switch , Receptacle for
solution pump and
corded plug included